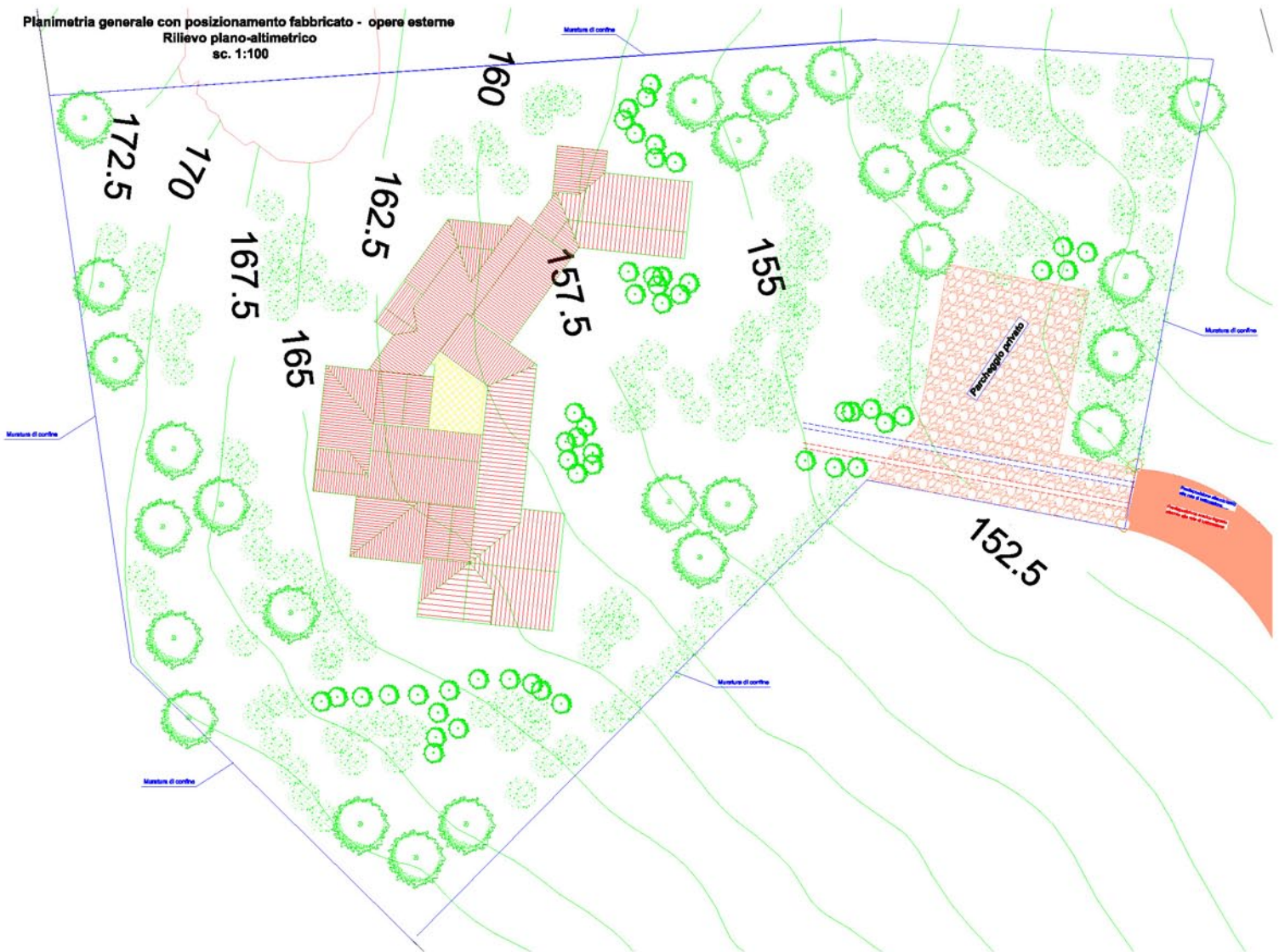


# Le Pantoge

PANTOGIA - PORTO CERVO - COSTA SMERALDA

 GreenAgency  
real estate

villa 23  
planimetria



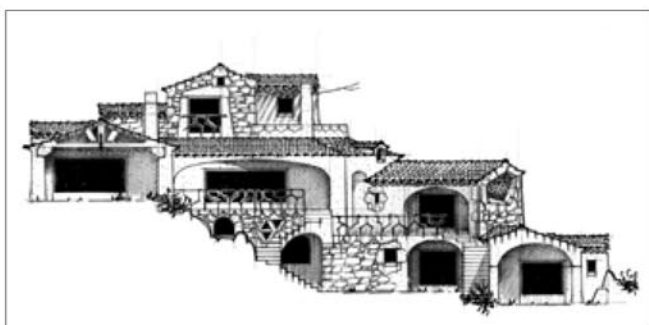
# Le Pantoge

PANTOGIA - PORTO CERVO - COSTA SMERALDA

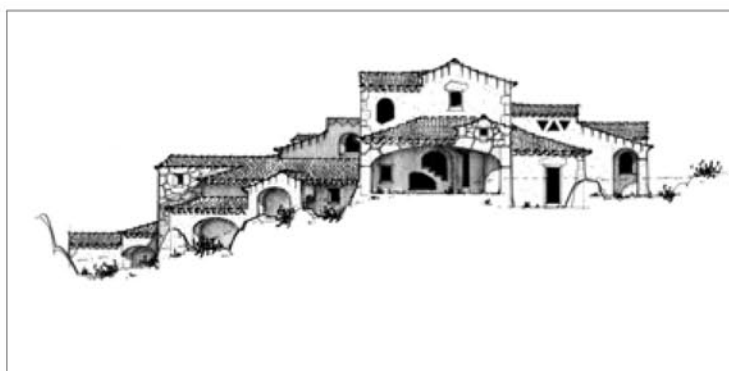
 **GreenAgency**  
real estate

villa 23  
*prospetto*

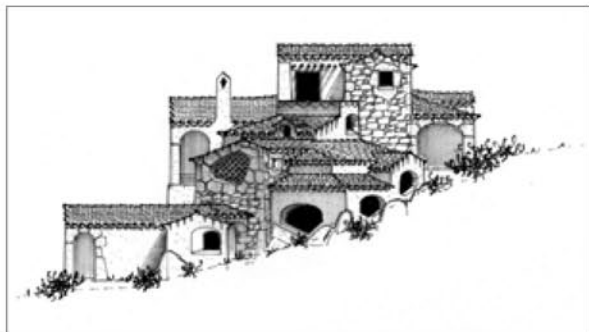
PROSPETTO LATO NORD-EST



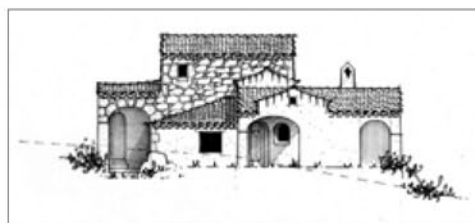
PROSPETTO LATO SUD-OVEST



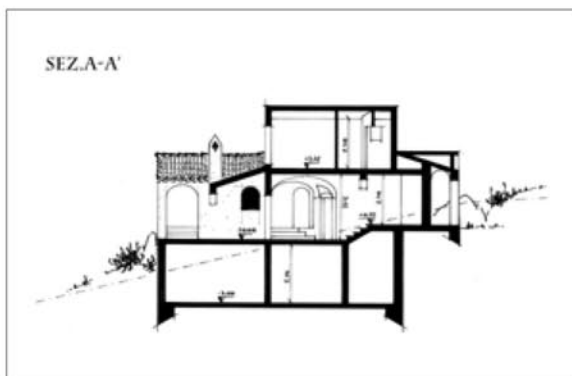
PROSPETTO LATO NORD-OVEST



PROSPETTO LATO NORD-EST



SEZ.A-A'



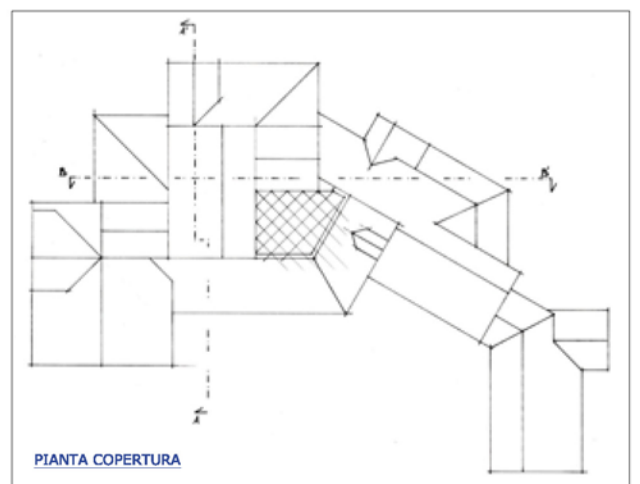
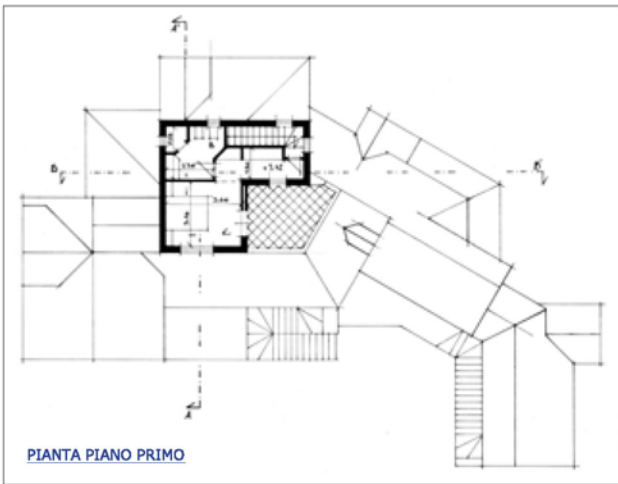
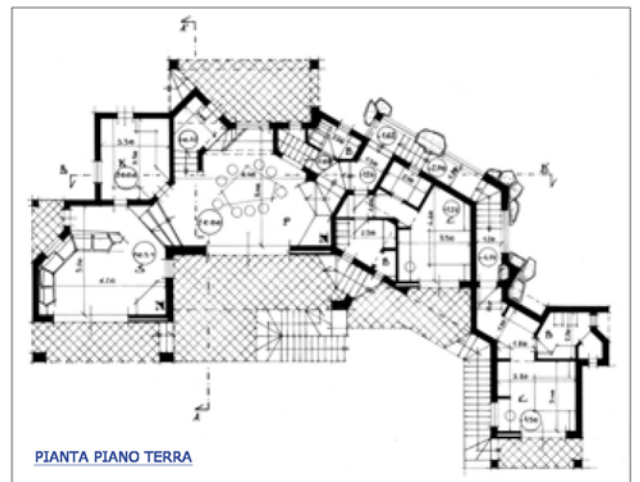
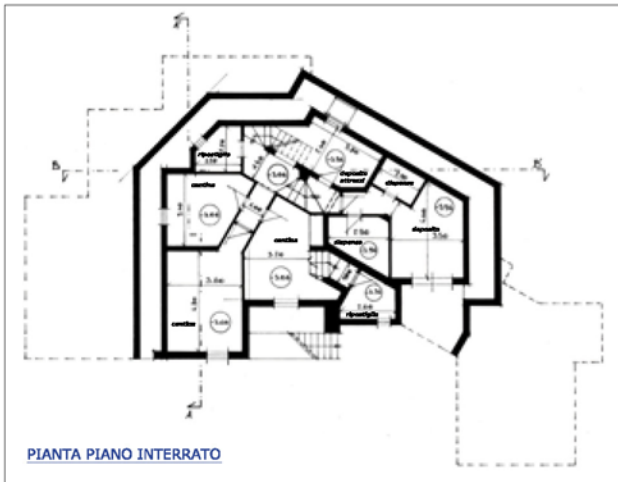
SEZ.B-B'



# Le Pantoge

PANTOGIA - PORTO CERVO - COSTA SMERALDA

villa 23  
pianta



**Rapporto R.A.I.**

Locale	Superficie	l/B	m progetto
Soggiorno	107,50 mq.	4,12 mq.	3,22 mq.
Cucina	15,04 mq.	1,50 mq.	2,62 mq.
Pranzo	43,20 mq.	6,16 mq.	3,77 mq.
Camera 1	16,60 mq.	2,10 mq.	4,76 mq.
Camera 2	12,77 mq.	1,59 mq.	3,50 mq.
Camera 3	12,47 mq.	1,55 mq.	3,45 mq.

**Tabella Volumetrica**

Figure	Superficie	Altezza	Volume
Fig. A	mq. 49,58	h. 3,12+0,30	mc. 166,34
Fig. B	mq. 32,95	h. 2,40	mc. 79,08
Fig. C	mq. 15,04	h. 2,80	mc. 42,11
Fig. D	mq. 32,25	h. 2,40	mc. 77,40
Fig. E	mq. 89,20	h. 2,60	mc. 231,92
Fig. F	mq. 34,18	h. 2,60	mc. 88,87
Fig. G	mq. 33,97	h. 2,40	mc. 81,53
Fig. H	mq. 34,11	h. 2,70	mc. 92,10
Fig. I	mq. 70,92	h. 3,00	mc. 212,71

Riepilogo

Totale superficie piano terra mq. 1.97,69  
Totale volume piano terra mc. 320,00

Totale superficie piano primo mq. 55,97  
Totale volume piano primo mc. 162,35

Totale superficie interrato mq. 1.27,00  
Totale volume interrato mc. 368,50

Fig. A mq. 15,07 Volume fuori terra = mc. 615,80  
Fig. B mq. 23,90 Superficie coperta residenziale = mq. 192,89  
Fig. C mq. 3,24 Volume coperto residenziale = mc. 365,50  
Fig. D mq. 4,05 Volume interrato in progetto = mc. 549,12+mc. 368,50  
Fig. E mq. 16,95  
Fig. F mq. 6,40

Volume coperto adibito 50% alla esp. coperta total = mc. 365,45  
Volume espone in progetto = mq. 69,34+92,43